

Menu tree

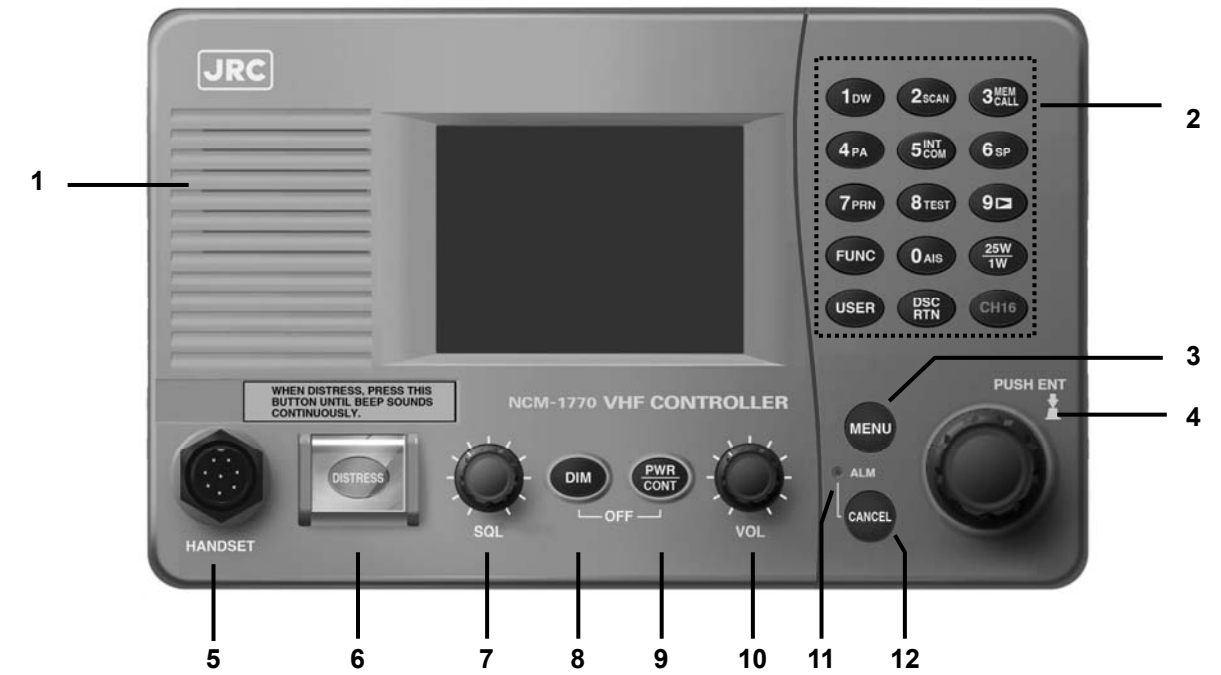
Main Menu	Hierarchical Menu 1	Hierarchical Menu 2	Shortcut Key	Note	
1. DSC non-distress call			DSC RTN	Also, MENU+1	
2. DSC drobose call			MENU+2		
3. Editing a distress msg			MENU+3		
4. DSC logs	4.1) Received distress	(Received distress list)		Printable	
	4.2) Received others	(Received others list)		Printable	
	4.3) Transmitted calls	(Transmitted calls list)		Printable	
5. AIS information - Other ships list - Proximity check - Proximity range	5.1) Other ships list		FUNC+0	DSC linking enable	
6. Voice function	6.1) Playback		FUNC+9		
	6.2) Public address		FUNC+4		
	6.3) Intercom (station list)		FUNC+5		
7. Channel operation	7.1) Scan - All CH scan - Memory CH scan - Select CH scan		FUNC+2		
		7.2) Dual watch	FUNC+1		
		7.3) Memory channel	FUNC+3	Printable	
		7.3.1) Memory CH list			
		7.3.2) Registration			
	7.4) Private channel			Printable	
	7.5) Weather channel			Printable	
	7.6) Region (ITU/USA/...)	(ITU/USA/CAN/IWW)			
8. Maintenance	8.1) Self diagnosis	8.1.1) Transceiver	FUNC+8	Printable	
		8.1.2) Controller		Printable	
		8.1.3) Transceiver log		Printable	
		8.1.4) Controller log		Printable	
		8.1.5) DSC loop		Printable	
	8.2) Alarm information	Alarm history		Printable	
8.3) System information			Printable		
8.4) Software version			Printable		
8.5) DSC AF inspection	(inspection screen)				
9. Setup	9.1) Date & time			Clock setting	
	9.2) POS/TIME	9.2.1) Own position			
		9.2.2) UTC of position			
		9.2.3) State display			
		9.2.4) Position source set			
	9.3) My controller	9.3.1) LCD adjustment			
		9.3.2) Sound	FUNC+6 (SP)		
		9.3.3) User key assign			
		9.3.4) Name			
		9.3.5) Menu shutdown			
		9.3.6) Hook switch			
		9.3.7) Off-hook notice			
	9.4) Contact list	9.4.1) Coast station list			Printable
		9.4.2) Ship station list			Printable
		9.4.3) Calling group list			Printable
9.4.4) PSTN number list				Printable	
9.5) DSC operation	9.5.1) Automatic ACK - Test call - Position RQ call - Polling call - Individual call			Printable	
		9.5.2) Safety/Routine ALM			
		9.5.3) Medical use			
		9.5.4) Neutral use			
	9.5.5) Expanded MMSI				
	9.5.6) Group ID				
	9.5.7) Inactivity timeout				
	9.5.8) Auto CH change				
9.6) AIS function					
9.7) Printer property	9.7.1) Controller printer			Printable	
	9.7.2) Transceiver printer			Printable	

# JHS-770S/780D

MARINE VHF RADIOTELEPHONE

Ship's name : \_\_\_\_\_

ID number (MMSI) : \_\_\_\_\_



1. Internal loud speaker
2. Numeric keypad (10-key) and the each assigned function
  - 1DW Starts the dual watch.
  - 2SCAN Displays the scan menu.
  - 3 MEM CALL Displays the memory channel menu.
  - 4PA Runs the public address mode using an external speaker.
  - 5 INT COM Displays the intercom menu.
  - 6SP Turns the internal loud speaker on or off.
  - 7PRN Prints the DSC messages or some displayed contents.
  - 8TEST Displays self-diagnosis menu.
  - 9 Replays the recorded receiving voice.
  - 0AIS Displays "Other ships list" of the AIS information.
  - FUNC Temporarily enables function keys mentioned above.
  - 25W 1W Switches the Tx power between 25W and 1W.
  - USER User defined key.
  - DSC RTN Shortcut key to a DSC routine call menu.
  - CH16 Sets the radiotelephone to the priority channel quickly.
3. MENU key
4. Jog dial
5. Handset connector
6. DISTRESS key (Under a clear cover with spring)
7. SQL (Squelch) control
8. DIM (Dimmer) key
9. PWR/CONT (Power/Contrast) key
10. VOL (Volume) control
11. ALM (Alarm) lamp
12. CANCEL key
13. Handset and cradle

## 1. Calling and communicating with the radiotelephone

Before operating below, previously adjust the squelch and volume controls to adequate positions.

### Making a radiotelephone call

1. Select CH16 or another agreed channel.
2. Lift the handset from the cradle, then press the PTT key and make a call as described below.
  - Say the calling station name ... Repeat 3 times.
  - "this is"
  - Say own ship's name ... Repeat 3 times.
  - "over"
3. Release the PTT key to listen.
4. When answered and agree on a working channel, change to that channel.
5. After checking that no station uses the working channel, begin conversation.
6. When terminating communications, say "out".

### Receiving a call on CH16

1. Lift the handset from the cradle, then press the PTT key and respond to the call as described below.
  - Say the caller station name.
  - "this is"
  - Say own ship's name.
  - "channel"
  - Working channel number
  - "over"
2. Release the PTT key, wait a moment, and then switch to the proposed working channel.
3. After checking that no station uses the working channel, begin conversation.
4. When terminating communications, say "out".

## 2. Using the feature of the radiotelephone

If required to input the information to perform the feature, move the cursor to the item and press ENT.

- Dual watch : **FUNC** → **1** (Note: Previously set a channel other than CH16.)
- All CH scan : **FUNC** → **2** → **1**
- Memory CH scan : **FUNC** → **2** → **2**
- Select CH scan : **FUNC** → **2** → **3** → Enter the channel coverage (from/to) → Execute
- Setting a memory channel : **FUNC** → **3** → Enter two digits of the memory channel.
- Setting a private channel : **MENU** → **7** → **4** → Enter three digits of the private channel. → ENT
- Setting a weather channel : **MENU** → **7** → **5** → Enter one digit of the weather channel.
- Changing a channel region : **MENU** → **7** → **6** → Selection from 1.ITU/2.USA/3.Canada/4.IWW.
- Setting a preset squelch : **FUNC** + **CANCEL** → SQL adjustment → [REG]
- Channel monitor : **CANCEL** (Note: Available only on the status display.)


## 3. Making a non-distress call via the DSC


When inputting information to call, move the cursor to the item and press ENT. Additionally when entering a work channel, the equipment would normally suggest it, but also enables to change it manually.

- A routine individual call : **DSC RTN** → Enter the receiver ID → Call
- A routine group call : **MENU** → **1** → Select RTN/Group/Rt → Enter the group ID → Call
- Semi/auto (PSTN) call : **MENU** → **1** → Select RTN/PSTN/Rt → Enter the coast station ID → Enter the TEL number → Call
- A safety call to all ships : **MENU** → **1** → Select SAF/All/Rt → Call
- A safety call to an individual station : **MENU** → **1** → Select SAF/Indv/Rt → Enter the receiver ID → Call
- An urgency call to all ships : **MENU** → **1** → Select URG/All/Rt → Call
- An urgency call to an individual station : **MENU** → **1** → Select URG/Indv/Rt → Enter the receiver ID → Call
- An individual call from the AIS information : **FUNC** → **0** → Select a station from Other ships list. → Select the category. → After that, follow the menu display.

## 4. Making a distress alert via the DSC

When in distress, make use of the dedicated red **DISTRESS** key to send a distress alert.

 **CAUTION**



- DO NOT test the distress alert.
- When sending the distress alert, follow the instructions of the captain or the officer in charge.
- If a false distress alert is transmitted accidentally, select the Cancel menu and transmit the distress cancel referring the guidance displayed on the controller. And then report the false distress alert to a nearby RCC (Rescue Coordination Center/ in Japan, inform the nearest Japan Coast Guard.)

Information to be reported:  
Ship's name, type, nationality, and ID number, the date/time, location and reason why the false distress alert was transmitted. Also the unit model name and manufacture number/date, if possible.

- Quick distress alert : To send the distress alert quickly, press **DISTRESS** key for 4 seconds. After receiving the acknowledgement, lift the handset and follow this procedure. "MAYDAY"/ "this is"/ the own ship's ID (MMSI)/ ship's position/ the nature of distress/ a rescue request and any other useful information
- Distress alert after editing : *If time permits, send the distress alert after editing the message as follows:* While pressing and holding **MENU** key, press **3** <sup>MEM CALL</sup> key to open 3. Editing a distress msg menu and enter the nature and/or the position and the time manually. Then, without closing that menu, press **DISTRESS** key for 4 seconds. (The subsequent procedure is as with mentioned above.)

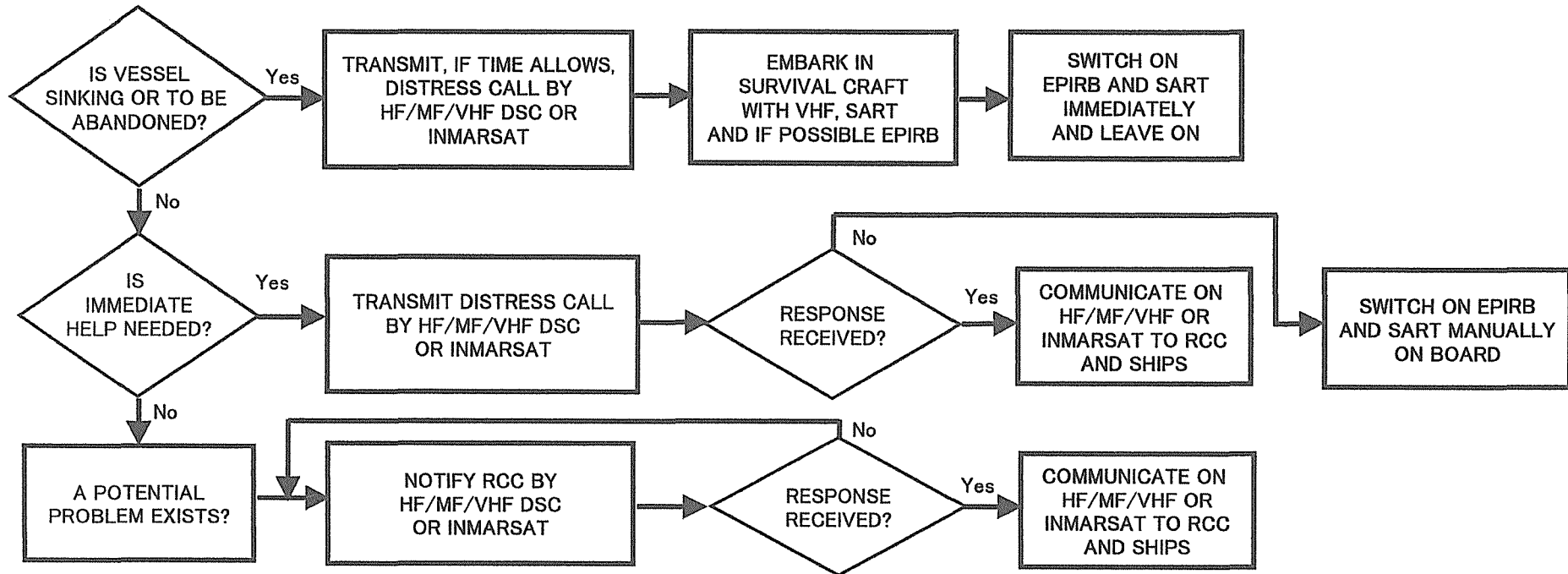
## 5. Silencing a receiving alarm of the distress/urgency DSC message

When receiving a distress or an urgency call, the receiving alarm will continue to sound unless silenced manually. To silence the alarm, press **CANCEL** key. After that, handle the message according to that content.

## 6. Maintenance

- Self diagnosis of the transceiver : **FUNC** → **8** → **1** → Select a test type and press ENT.
- Self diagnosis of the controller : **FUNC** → **8** → **2** → Select a test type and press ENT.
- Checking the "loop test" only : **MENU** → **8** → **1** → **5** → Press ENT.
- A safety test call : **MENU** → **1** → Select SAF/Indv/Test → Enter the receiver ID → Call

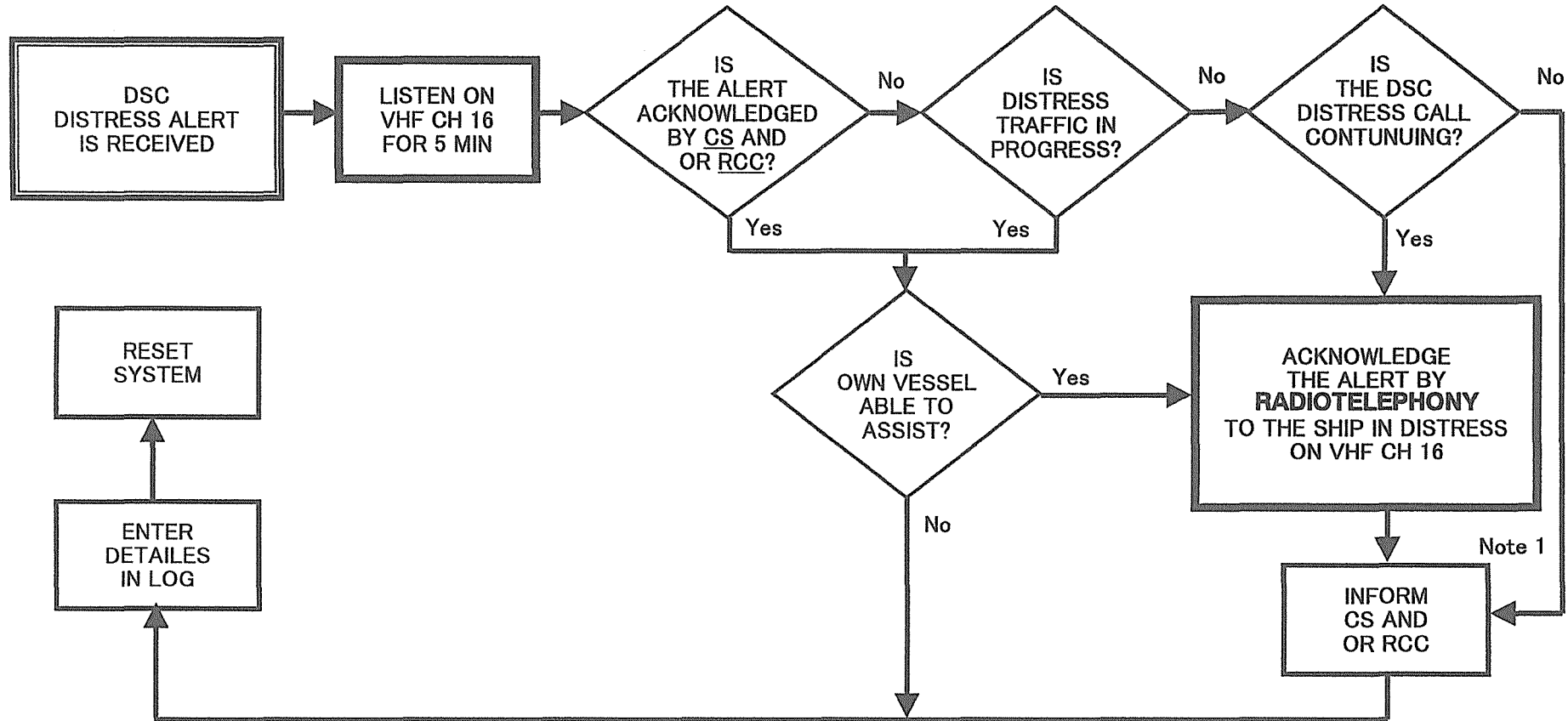
# GMDSS OPERATING GUIDANCE FOR MASTERS OF SHIPS IN DISTRESS SITUATIONS



1. EPIRB should float free and activate automatically if it cannot be taken into survival craft.
2. Where necessary, ships should use any appropriate means to alert other ships.
3. Nothing above is intended to preclude the use of any and all available means of distress alerting.

RADIO DISTRESS COMMUNICATIONS			
	DIGITAL SELECTIVE CALLING (DSC)	RADIOTELEPHONE	RADIOTELEX
VHF	CHANNEL 70	CHANNEL 16	
MF	2187.5 kHz	2182 kHz	2174.5 kHz
HF4	4207.5 kHz	4125 kHz	4177.5 kHz
HF6	6312 kHz	6215 kHz	6268 kHz
HF8	8414.5 kHz	8291 kHz	8376.5 kHz
HF12	12577 kHz	12290 kHz	12520 kHz
HF16	16804.5 kHz	16420 kHz	16695 kHz

# ACTIONS BY SHIPS UPON RECEPTION OF VHF DSC DISTRESS ALERT



**REMARKS:**

Note1 : Appropriate or relevant RCC and/or Coast Station shall be informed accordingly. If further DSC alerts are received from the same source and the ship in distress is beyond doubt in the vicinity, a DSC acknowledgement may, after consultation with an RCC or Coast Station, be sent to terminate the call.

Note2 : In no case is a ship permitted to transmit a DSC distress relay call on receipt of a DSC distress alert on VHF channel 70.

CS = Coast Station

RCC = Rescue Co-ordination Center

国際VHF無線電話装置  
Marine VHF Radiotelephone  
Model JHS-770S/780D



## 注意



- 遭難時以外の遭難警報の送信は禁止されています。
- 遭難警報の送信は、本船の責任者の判断により実施してください。
- 遭難警報を受信した場合は、本船の責任者に通報してください。
- 誤って遭難警報を送信した場合、Cancelメニューにより遭難警報のキャンセル送信を行ってください。その後、誤送信したことを救助調整本部（RCC、日本の場合は最寄りの海上保安部署）に画面の案内に従って以下の事項を通報します。  
船名、船種、船籍、ID番号、誤発射及び停止した位置とその時刻、誤発射の原因、できれば装置の型式、製造番号、製造年月



## CAUTION



- DO NOT transmit distress alert except for distress situation.
- Distress alert must be under the instruction of person in charge.
- If a distress alert is received, inform the person in charge.
- If a false distress alert is transmitted accidentally, select the Cancel menu and transmit the distress cancel referring the guidance displayed on the controller. And then report the false distress alert to a nearby RCC (Rescue Coordination Center/ in Japan, inform the nearest Japan Coast Guard.)  
Information to be reported:  
Ship's name, type, nationality, and ID number, the date/time, location and reason why the false distress alert was transmitted.  
Also the unit model name and manufacture number/date, if possible.

この警告ラベルはVHF無線電話装置の近くの見やすい場所に貼り付けてください。  
Stick this label on clearly visible surface at in the vicinity of VHF radiotelephone.

**JRC** 日本無線株式会社

**JRC** *Japan Radio Co., Ltd.*