

# Chapter 6. Updating program

## 6.1 Updating program

The program for TERM CPU and RF CON/CPU is updated.

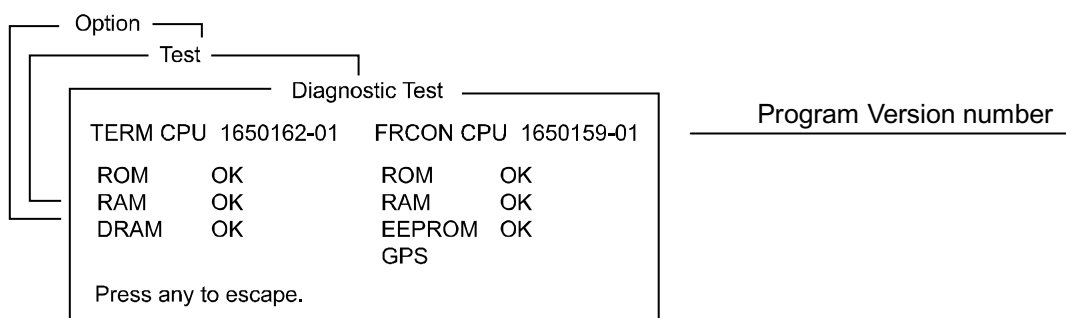
To update the program, insert the floppy disk to the floppy disk drive and then turn on the terminal unit, IC-215. The updating starts automatically.

*Table 6.1.1 Program number*

Program	Program number
TERM CPU	1650162-01.xx
RF CON/CPU	1650159-01.xx

### 6.1.1 Checking program version

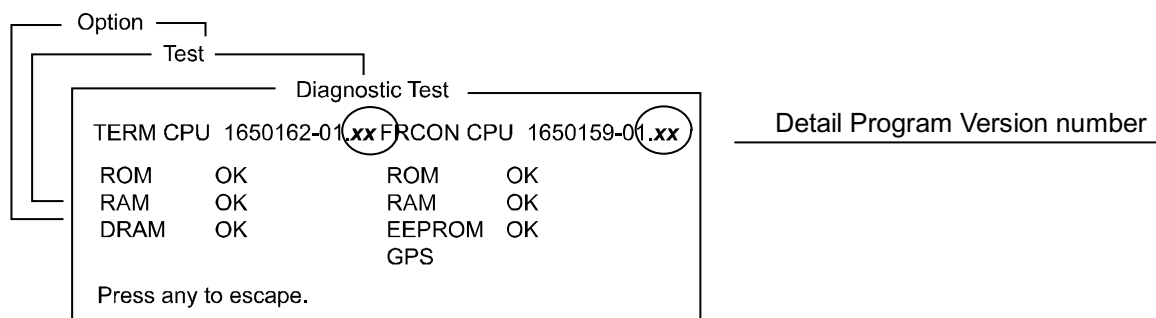
1. Check the program version of RF CON CPU and TERM CPU by the self-test ([F7/Option]-[7/TEST]-[3/Self Test]).



*Fig. 6.1.1 Checking program version*

2. Checking detail program version

After the test, press [F] [E] [L] [C] [O] [M] while holding [Ctrl] to show the program version in detail.



*Fig. 6.1.2 Checking detail program version*

### 6.1.2 Procedure

1. Set the floppy disk, TERM CPU or RF-CON CPU to the floppy disk drive of the terminal unit.
2. Turn on the system.
3. The following message appears.

*When TERM CPU is updated.*

```
FD Boot Ver1.03
IC-215 Terminal Software update for FELCOM15
Loading: LOADING_A.BIN----Xsec
```

```
FELCOM15 Term CPU Software Update
```

Are you sure update ? (Y/N)

*When RF-CON CPU is updated.*

```
FD Boot Ver1.03
MAC Address writer for FELCOM15
Loading: UPRFCON.BIN----Xsec
```

```
FELCOM15 Rfcom CPU Software Update
```

Are you sure update ? (Y/N)

4. Press [Y] to update the program.
5. The updating program starts automatically. The following message appears.

*When TERM CPU is updated.*

```
Now erasing
Now Updating program
Updating xx % (last xxx sec)
```

*When RF-CON CPU is updated.*

```
Execute STEP1
Execute STEP2
Now erasing
xxx percent completed
```

6. The updating is finished with the following message/display appears.

*When TERM CPU is updated.*

The status display appears automatically.

*When RF-CON CPU is updated.*

```
Finish Version up.data
Please power OFF, and remove the FD
```

7. Turn off the system, and turn it on again.
8. Check the program version of RF CON CPU and TERM CPU by the self-test.

## 6.2 Program files

Each program disk contains following files. Note that the file size is reference only.

*Table 6.2.1 Program files*

TERM CPU		RF-CON CPU	
File	Size	File	Size
Boot.ini	1k	Boot.ini	1k
Termcpu.bin	683k	Loadrfc.bin	5k
Loadfd_a.bin	46k	Rfconcpu.bin	360k
		Uprfcon.bin	43k

## 6.3 Installing Terminal software to PC

The terminal software of FELCOM15 is required to install to the PC connected to [DET] port.

- Type: 16-5-0164
- Code No.: 000-4438-920
- Program number: 1650164-xx

OS: Windows 95/98/2000/NT/ME/XP

Memory: 32 MB and more

Free space on the hard disk: 20 MB and more

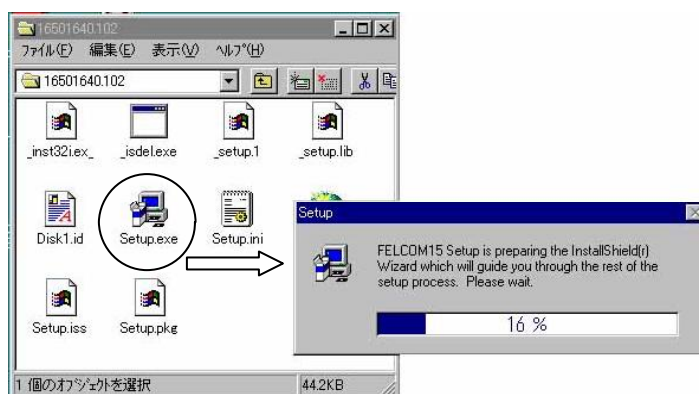
CPU: Pentium 100 MHz and more

Floppy disk drive: Available

The procedure to update terminal software is the same as that of software installation.

### To install/update terminal software:

1. Insert PC terminal program floppy disk into the floppy disk drive.
2. Double click "Setup.exe" file, and the installation starts automatically.



3. Follow instruction which appears on the screen. When updating FELCOM15 terminal software, overwrite "F15PC.EXE" file.



1. Click "NEXT".



2. Check the folder to which the program is installed and then click "NEXT".



3. Click "NEXT".



4. Click "NEXT".



5. Wait until the process is completed.



6. Click "Finish".

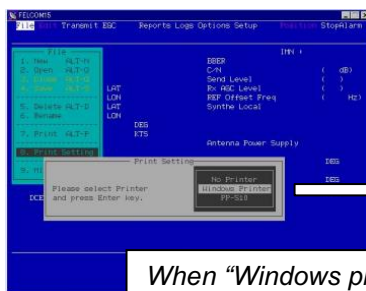
4. After installation, turn off the PC and on it again. To run FELCOM 15 terminal software, double click "F15PC.EXE" icon.



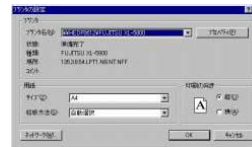
"F15PC.EXE" icon

**Note)**

1. When the FELCOM15 terminal for PC is used, the installation is automatically started by opening “F15PC.EXE”.
2. Change setting “Active Port” of [F8] [2] of IC-215 to “All”.
3. Some item of [F8] cannot be set by PC terminal.
4. Commercial printer for Windows and PP-510 can be connected to “Printer” port on PC. Printer setting is made through “Printer setting” menu ([F1]-8).  
With the commercial printer, error messages, such as “WARNING, TROUBLE: XXX” are not printed out.



When “Windows printer” is selected.



“Printer setup” appears, select to printer.

Program disks contain following files. The file size is reference only.

Terminal program for PC			
File	Size	File	Size
_inst32i.ex_	288 k	Setup.exe	45 k
_isdel.exe	8 k	Setup.ini	1 k
_setup.1	407 k	Setup.ins	80 k
_setup.lib	200 k	Setup.iss	1 k
Disk1.id	1 k	Setup.pkg	1 k

Following files are automatically created every time F15.EXE is executed.

- F15PC.LOG: Communication log file ([F6]-4), saving 32 logs.
- F15PC.REP: Settings in “Message, Data Report” ([F5]-1,2) menu from terminal unit
- F15PC.RXM: Receiving message ([F6]-2 and -3) log files, saving 32 logs or 32 kB.
- F15PC.TXM: Sending message ([F6]-1) log file, saving 5 logs.
- F15PC.DAT: Includes following settings;
  - Editor Setup ([F8]-3), Terminal Setup ([F8]-4), Auto Mode Setup ([F8]-6),
  - E-Mail Setup ([F8]-7), Directory ([F8]-8), Station List (F8-9-1),
  - LES List ([F8]-9-2), E-Mail Service List ([F8]-9-5) and Printer Setting ([F1]-8)